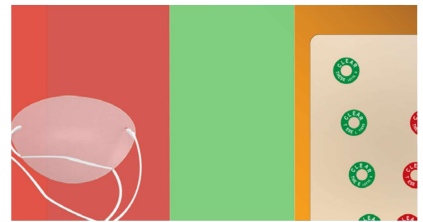
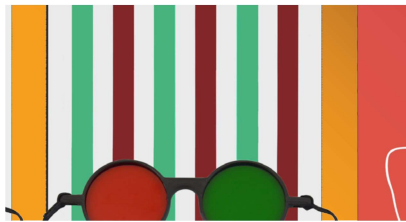
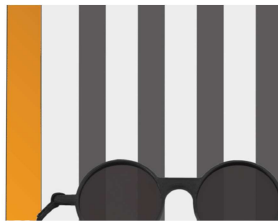


Good-Lite Vision Therapy Catalog

YOUR SOURCE ^{for} VISION

T O D E
C L 3 Z
M 7 U A
R X Z 2
5 J 3 8
T K C G



Cognitive Test • Grating Acuity • Wall Charts • Handheld Charts • EyeSpy 20/20
0x18 Charts • ETDRS Charts • Low Vision • Intermediate Vision • Near Vision • R
g Cards • ETDRS Cabinet • Spot Vision Screener • ESV1200 - 9x14 • ESV1018 - 10
Insta-Line • CSV-1000 • Super Pinhole • Accessories • Screening Software • Test
Software • Fixation • Occluders • Fun Frames • Prisms • Hyperopia • Retinoscopy
ve Models • Stereo Test • Worth 4-Dot • Color Books & Tests • D15 Style Color Te
esaturated Color Test • Projector Slides • Continuous Text • Adult Charts • Child
Charts • Pediatric Charts • Vectographic Slides • Amsler Grid • Campimeter • Pri
Bar • Loose Prism • Spanish • Vectograph • Maddox • Cylinders • Phoropter • Tr
ens/Frames • Filters • Risley • Eye Patch • Cont
nsitivity • Visual Field • Cognitive Vision • Adaptation • Color Vision • Optokin
Tangent Screen • Flat & Curved Prism • Magnifier • Flipper • Slit Lamp

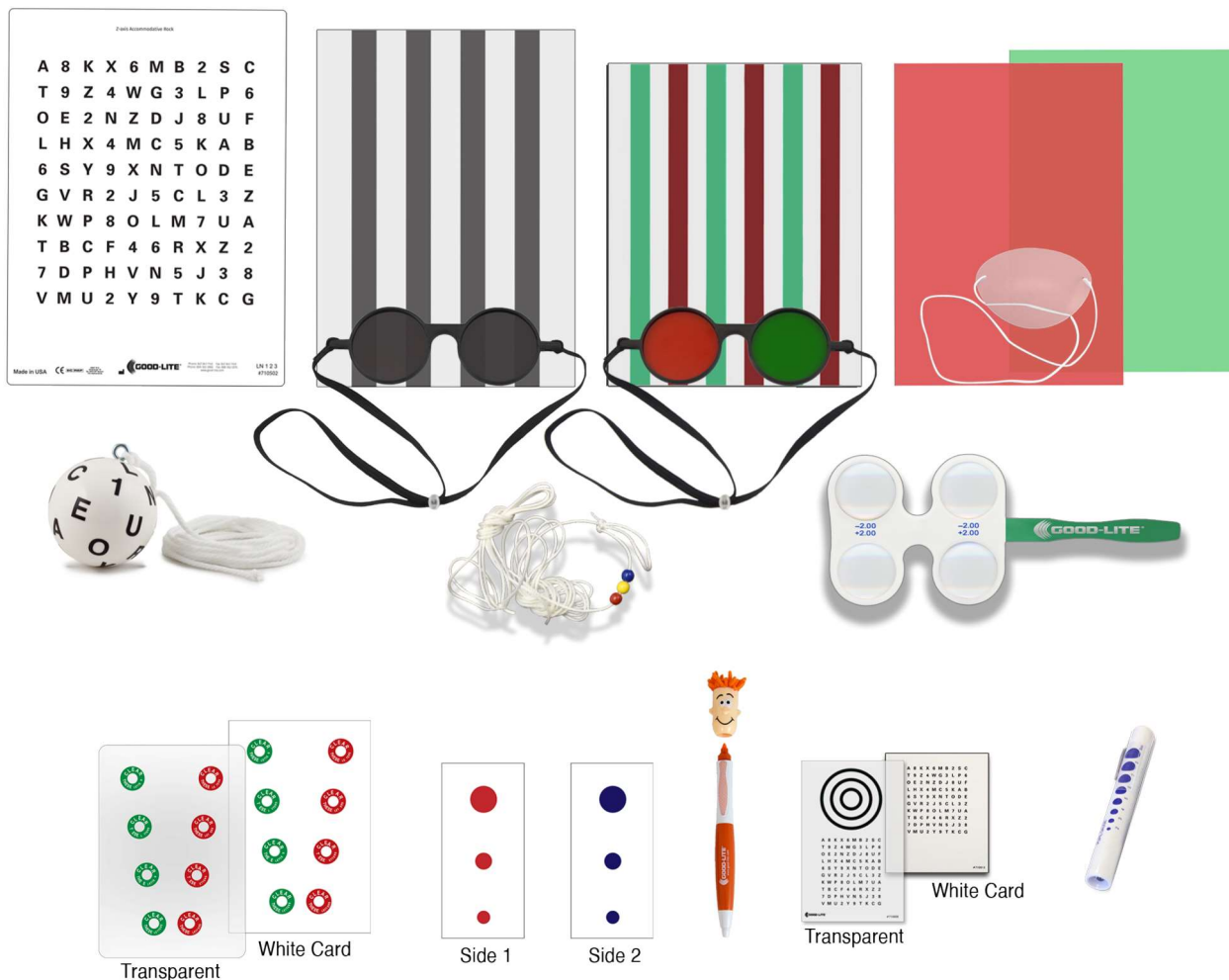


GOOD-LITE®



Vision Therapy

Good-Lite is dedicated to providing the highest quality Vision Therapy products for your practice. Visit www.good-lite.com.



HOME VISION THERAPY KIT

#380003

A take-home kit that lets your patients do Vision Therapy exercises at home.

Includes (Each item can be purchased individually):

- 10 foot brock string - **#603500**
- +/-2.00 flipper - **#127200**
- Paper lifesaver card - **#108500**
- Clear lifesaver card - **#108600**
- Frosted patch - **#166000 Pkg of 3**
- Red green bar reading - **#681400**
- Reversible red/green anaglyph goggles - **#955901**
- Polarized reading bar sheet - **#681500**
- Polarized goggles - **#493600**
- Marsden ball - **#108150**
- Z-axis accommodative rock chart - **#710502 Pkg of 20**
- Opaque near z-axis card - **#710513**
- Clear near z-axis card with bullseye - **#710505**
- Red vinyl sheet - **#681101**
- Green vinyl sheet - **#681201**
- Iridescent Penlights - **#679900 Pkg of 6**
- Spike Fixation pen - **#460310 Pkg of 3**
- Three dot card - **#108801**

order online or find more information @ www.good-lite.com

phone toll-free : 1-800-362-3860



HECOstix

HECOstix are revolutionary trainers which require users to track colors and process information rapidly to catch them correctly.

HECOstix are used to improve:

- Hand Eye Coordination
- Reaction Speed
- Information Processing

#108930



Meyer's Flying Foam Rings

Meyer's Flying Foam Rings, 6 inches in diameter, and 1 inch thick for use in Vision Therapy. The therapist throws the rings at varying angles and the patient catches the rings by thrusting his/her hand through the circle.

#108910



Marsden Balls

A basic vision therapy tool no vision therapy practice should be without. Improved Marsden Balls now have a better weight which offers a better swing.

#108100 - Soft White Vinyl

#108770 - Soft White Foam

#108700 - Soft Yellow Foam

#108150 - Hard White Plastic



Brock Strings and Brock String Handle

Brock strings used for the treatment of convergence insufficiency and other binocular vision anomalies. Used to develop skills of convergence as well as to disrupt suppression of one of the eyes.

Brock strings can be bought in a variety of sizes:

- 10 ft String w/ 5 Cordlock Beads - **#702901**
- 20 ft String w/ 3 Cordlock Beads - **#702801**
- 10 ft String w/ 5 Beads - **#603200**
- 20 ft String w/ 3 Beads - **#603100**
- 6 ft Economy String w/ 5 Beads and No Handle - **#603606**
- Brock String Handle - **#603111**



Good-Lite Bunt bat

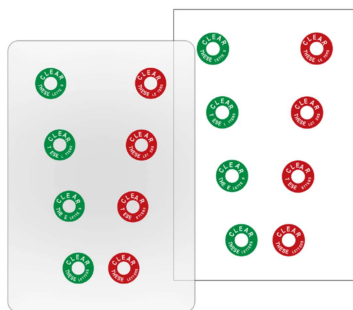
The bunt bat is used during vision tracking exercises, hand-eye coordination exercises, and is the perfect companion tool for use with the Good-Lite Marsden Ball.

These exercises help patients increase awareness of where their body is in space, object tracking anticipation, and overall balance.

#108190

Vision Therapy

Red/Green and Stereo



Hendrickson Lifesaver Card

Base-in Lifesaver vision therapy cards are used on patients who need to increase their ability to diverge without effort. These cards are often sent home with the patient for therapy training.

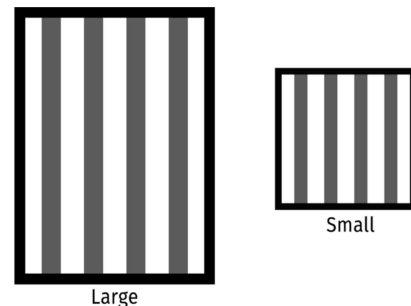
#108500 - Paper
#108500 - Translucent



Red/Green Reading Sheets

A Red/Green Reading sheet used for anti-suppression training while your patient reads or looks at a picture. These sheets are to be held 1 inch above from the page or image when training.

#681400 - Large 8" x 11"
#681300 - Small 5" x 7"



Polarized Reading Sheet

Polarized Reading Sheets are great for anti-suppression training while reading or looking at pictures. These work better if held off-page an inch.

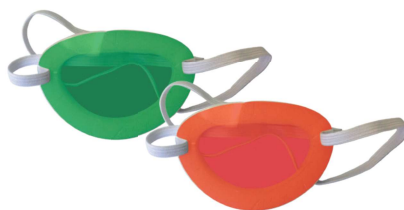
#681500 - Large 8.5" x 11"
#681600 - Small 7.5" x 5.5"



Reversible Red/Green Anaglyph Goggles

Lightweight Reversible Red/Green Anaglyph Goggles for orthoptic training and Vision Therapy. Comes with elastic string for adjusting to different head sizes.

#955901



Red and Green Anti-Suppression Patch

Anti-Suppression Patches intended to be used with various games and exercises in anti-suppression training. Exercises include using a red or green pencil or using a red or green marker to force the use of the suppressing eye. Other exercises can help with ocular motor difficulties, accommodation development, and visual perception training.

#682102 - Green
#676202 - Red



MFBF MATCHING GAME

The MFBF Matching Game was developed as an exercise that serves as a bridge from monocular to binocular activities, improving the efficiency of the accommodative and binocular systems.

#705200 - English
#705300 - Spanish

order online or find more information @ www.good-lite.com

phone toll-free : 1-800-362-3860



Worth 4-Dot Flashlight

A flashlight used to assess a patient's Flat Fusional ability. Flat Fusional Testing is indicated any time stereopsis falls between (50) sec of arc, on those patients with suspected strabismus and on preschool children. The Worth Test should also be used when evaluating cases of reduced monocular visual acuity that does not improve with the Pinhole Test.

#466800



Worth 4-Dot Flashlight Set

A flashlight used to assess a patient's Flat Fusional ability. This set includes the Worth 4-Dot Flashlight and a pair of red/green glasses.

#950100



LEA SYMBOLS® Worth Suppression Flashlight

A flashlight used to assess a patient's Flat Fusional ability. This set includes a Worth Suppression Flashlight featuring LEA SYMBOLS® optotypes and a pair of red/green glasses.

#520600



LEA SYMBOLS® Suppression Test Attachment

For exams in which the child is familiar with the LEA SYMBOLS®, the new LEA SYMBOLS® Suppression test attachment provides the same Worth 4 Dot capability using LEA SYMBOLS® as the targets.

The suppression test attachment fits on your Welch Allyn or Keeler transilluminator and supports Worth 4 Dot testing using red/green goggles.

#499600



Worth 4-Dot Suppression Test Attachment

The Worth 4-Dot Suppression Test Attachment fits on your Welch Allyn or Keeler transilluminator and supports Worth 4 Dot testing using red/green goggles.

#475900 - Each

#476100 - Set of 1 with Red/Green Glasses



Lichtenstein Fixation Box

The Lichtenstein Fixation Box is used to measure fusion at 20 ft (6 m), as well as to maintain Fixation for your younger patients. The box contains a Worth 4-Dot examination, a white Fixation light for adults and older children, as well as a Fixation light that changes colors for strabismus measurements or refraction.

#995000

Vision Therapy

Accommodation, Training, and Fusion



Aperture Rule™ Trainer Kit

Aperture Rule™ Trainer Kit is a standard instrument in most VT programs. Helps improve low fusional and accommodative reserves, poor stereopsis, Fixation disparity suppression, and tight accommodation-conversion relationship.

#370022



Translid Binocular Interactor (TBI)

Translid Binocular Interactor (TBI) application encourages the interplay between both eyes in the visual process. In the case of alternating vision, it can assist a slow change back to simultaneous sight. It can help break down inhibitions in the visual process between both eyes.

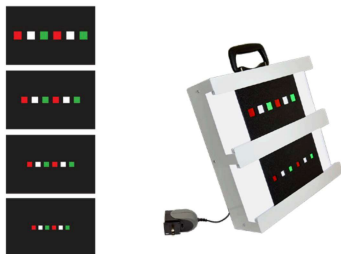
#280002



Accommodation Near Point Rule

Near Point Accommodation Rule is the point closest to the bridge of the nose where convergence and binocular single vision can no longer be maintained as an object approaches.

#151500



Vertical Fusion Target Set

Vertical Fusion Target Set is used in the treatment of vertical tropias or strabismus. Each of the four black cards fits into the **Good-Lite Dual Illuminated Vectograph Viewer (not included)**. The cards provide the doctor and patient with targets that provide the appropriate feedback to help in the reduction of the angle of deviation.

#713300



Metronome For Timed Orthoptic Exercises

Timed Orthoptic Exercises Metronome for easy to set tempo and beat time settings. Choose 2/4, 3/4, or 4/4 tempo then select BPM in the range of 40 to 250 Beats Per Minute. The first beat of each tempo is indicated by a slightly different pitch.

#557700



FusioBox Visual Trainer

FusioBox enables you to train almost any VT patient with vergence problems to reach a fused image. Through an optical septum, every eye sees a different image (made of small light bulbs). The patient has to fuse both images to one.

#280003

order online or find more information @ www.good-lite.com

phone toll-free : 1-800-362-3860

Vision Therapy

Yoked Prisms and Flippers

Yoked Prism Sets are available in flat and corrected curve sets and includes a foam-lined metal case. Can be purchased with 38mm or 48mm lenses.

This kit is customizable. You can choose which prisms you want and which prism frame you want.

Each set includes:

- 5 or 9 prisms
- One yoked prism frame of your choice

#617900 - 48mm Flat Yoked Set w/ 5 Prisms

#618000 - 48mm Flat Yoked Set w/ 9 Prisms

#618100 - 38mm Flat Yoked Set w/ 5 Prisms

#618200 - 38mm Flat Yoked Set w/ 9 Prisms

#611500 - 48mm Corrected Curve Yoked Set w/ 5 Prisms

#611600 - 48mm Corrected Curve Yoked Set w/ 9 Prisms

#611700 - 38mm Corrected Curve Yoked Set w/ 5 Prisms

#611800 - 38mm Corrected Curve Yoked Set w/ 9 Prisms

Yoked Prism Sets



Frame with
360° Compass
#614700 - 38mm
#614900 - 48mm



Frame with
String Elastic
#608400 - 38mm
#608600 - 48mm



Frame with
Adjustable Temples
#610900 - 38mm
#611100 - 48mm



Polarized and Anaglyph Flipper

Combination polarized and red/green stereo lenses into one flipper. Use the Red/Green for the Worth 4 Dot or another anaglyph test then flip to Polarized lenses for Stereo Fly.

#488400



Alternating Flippers (Rock Flippers)

Alternating Flippers are used to increase the speed and reduce the latency of the speed of response for patients that have difficulty shifting focus. These flippers have a plus lens at the power specified on one side and an occluding lens on the other side.

Visit our website for part numbers.



Confirmation Flippers

ALL GLASS OPTICS - no distortions or yellowing. Durable soft handle. Select from -/+ 0.25 up to 4.00 diopters in 0.25 increments with power listed on handle. Well balanced and comfortable to use.

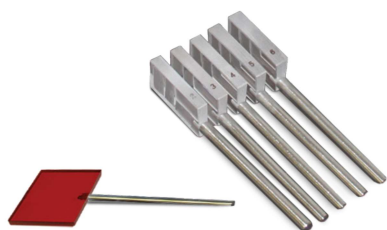
Visit our website for part numbers.



Individual Prism Flipper

Hand-held individual prism flippers. Orientation of the prism flippers are Base In and Out.

Visit our website for part numbers.



Prism on a Stick

Stick mounted prisms stay cleaner and avoid as many fingerprints compared to square prisms. The less often they need to be cleaned, the longer these will last. Prisms on a stick range from 1/2 to 50 diopters.

Visit our website for part numbers.



Loose Prism Set

These high quality Prisms are used to measure the deviation in strabismus. It is important to conduct polarized testing through Prisms that are known to cause the least interference with polarization.

#444900 - Set of 16
#444500 - Set of 22



Prism Set with Magnetic Handle

Loose Prisms with magnetically attachable handles. The handles permit much easier and less cumbersome counter-top storage, transport, and use than devices with permanently attached handles.

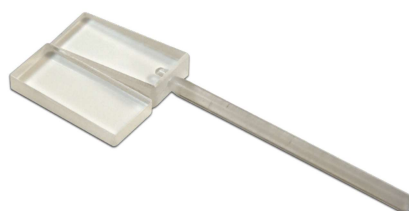
#444910 - Set of 16
#444510 - Set of 22



Vergence Facility Prism

The Vergence Prism quickly screens for binocular vision. Use to get the patient to cycle between the two Prisms up to 15 cycles per minute. Prisms are 12D base out and 3D base in.

#477700 - Mounted
#477701 - Unmounted
#112080 - Magnetic



Vergence Prism 6D BO & 2D BI with Handle

Vergence Facility testing has been shown to be one of the most important methods of detecting patients with binocular vision disorders and symptoms. Diagnosis of non-strabismus binocular vision abnormalities can be improved through the use of vergence facility testing at near.
#477702



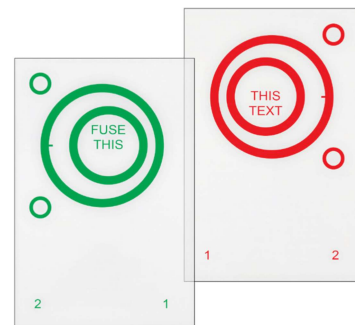
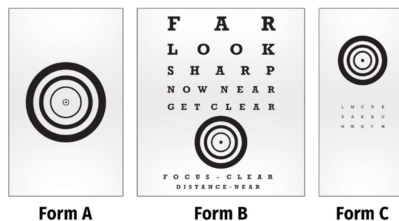
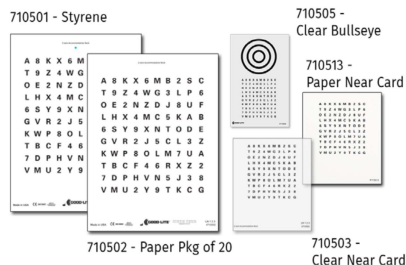
Bishop Alignment Prism Set

Bishop Dual Prism Alignment System, a new tool developed to provide advantages in measuring large angle strabismus prior to correction. With the Bishop Tool, two base-in or base-out Prisms are held in place using magnetic Fixation to a metal plate with a ferrous surface.

#113110

Vision Therapy

Comprehension, Convergence, and Divergence



Z-Axis Accommodative Rock Chart

Z-axis Accommodative Rock cards are simple tools to help patients develop accommodative facility and control. They can be prescribed as a simple home-based exercise to help patients experience responsibility and control over their focusing mechanism.

Visit our website for part numbers.

Transparent Target Forms

Bullseye targets based on procedures developed by Lawrence W. MacDonald, OD and Baxter Swartwout, OD. Each comes in a pack of 5 translucent forms.

#108200 - Form A

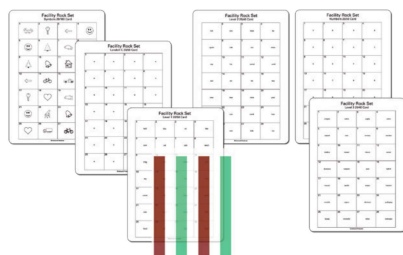
#108300 - Form B

#108400 - Form C

Red/Green Eccentric Circles

- Central anti-suppression check. The word FUSE is only seen by one eye, the word TEXT is seen by the other eye, and the word THIS is seen by both eyes.
- Convergence and divergence training when red/green glasses are used. Ex. If the green card is on the right and the green filter is over the left, divergence is done when fusing the two images.

Visit our website for part numbers.



Facility Rock Test Set

Facility Rock Test Set provides a broad set of tools to accurately diagnose and provide therapy for accommodative and vergence abnormalities.

#710400 - Set

#710450 - Charts Only

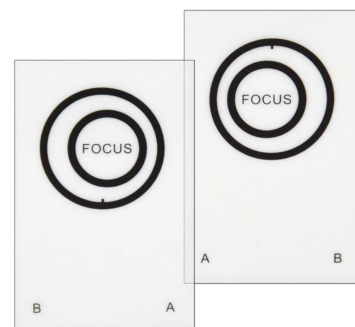


Color Facility Rock Game

The Color Facility Rock Game, used for accommodative facility development, challenges both reading and color comprehension skills. This game can be used in the treatment of traumatic brain injury patients.

#710600 - English

#710620 - Spanish



Black Eccentric Circles

- Central anti-suppression check. The word FOCUS is seen by both eyes.
- Fixation disparity check. Small hash mark on the top of the outer ring on one card, and on the bottom of the ring on the opposite card to help improve accurate alignment and help reduce fixation disparity.

Visit our website for part numbers.

order online or find more information @ www.good-lite.com

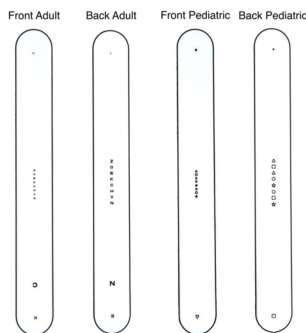
phone toll-free : 1-800-362-3860



Good-Lite Fixation Cubes

Easily maintains interest and fixation.

- #256300 - Red
- #256400 - White
- #545010 - Orange
- #704500 - Blue
- #731010 - Green
- #731011 - Black
- #256500 - Set of 4
- #256600 - Set of 6



Detailed Fixation Stick

This set of four Fixation Sticks has detailed targets to stimulate accommodation and to assess Fixation and saccades. These Fixation sticks are calibrated at 16 inches/40cm. The vertical lines of symbols and letters are 20/30 and 20/50. The single symbols and letters are 20/30, 20/50, and 20/80.

#542055



Acrylic Ball Wolff Fixation Wand

Wolff Wands provide specialized Fixation targets used in various procedures such as Retinoscopy, Cover Test, and Ocular Motility.

- #657700 - Small 1" Ball
- #657800 - Large 1.5" Ball



Wolff Wand Kit with Stand

Wolff Wands Kit provides specialized Fixation targets used in various procedures such as Retinoscopy, Cover Test, and Ocular Motility. The Wolff Wand kit contains a 1/2 inch (13 mm) polished brass ball, a nickel-plated ball, and both a large and small Acrylic Fixation Wand. The Wolff Wand Stand is also included in this kit.

#660700



Brass Ended Wolff Wands

A set of wands used as fixation targets in various procedures such as retinoscopy, Cover Test, and Ocular Motility. The basic Wolff Wand set contains a 1/2 inch (13 mm) polished brass ball and a silver nickel-plated ball on each end of 10 1/2 inch (28 cm) steel rods.

#657500



Detailed Anti-Suppression Fixation Stick

The Detailed Anti-Suppression Fixation Stick is a handy instrument for working with children. The stick contains one Red/Green suppression test, colorful Eye-Team character fixation targets, reading text, and acuity measures. Good test for pursuits, near point of convergence, & accommodation. Printed on both sides.

#545040

No one in the industry does LED cabinets like Good-Lite! As pioneers in the use of LED's in our illuminated cabinets, you can count on the quality and durability of this Good-Lite unit. Our new and improved illuminated dual vectograph viewer holds two sets of vectographs! This new universal model allows you to use both Stereo Optical and Vision Assessment Corporation Vectographs.

Use this unit with other therapies such as tranaglyphs, our MBBF Matching Game (#705200), and our Vertical Fusion Target Set (#713300).

#621707

Dual Illuminated Vectograph Viewer



Vectograph Viewers - VAC

VAC Vectograph Viewer greatly simplifies Vision Therapy, by holding vectographs at the proper angle and allows sliding the vectographic panels to the 'breaking point' and back to the 'recovery point'. These vectograph viewers support the full extension of the panels to their maximum base-in and base-out capabilities.

#585600 - VAC Single

#587800 - VAC Double

#585700 - Universal Single

#587900 - Universal Double



Stereoacuity Glasses and Goggles

Polarized glasses and goggles used with Linear Polarized Reading Sheets. Goggles come with an elastic string for adjusting to different head sizes.

#103050 - Adult Glasses

#103150 - Pediatric Glasses

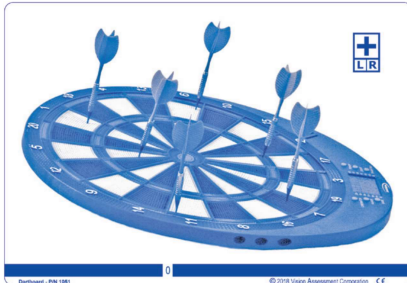
#493600 - Goggles



Pumpkin Patch Polarized Variable Vectograph

Pumpkin Patch Polarized Variable Vectograph has a range of 6,100 seconds of arc stereopsis depth. Pumpkin Patch images above, below, and even with the image at +30 to +1500 seconds of arc & -25 to -1100 seconds of arc. 16-diopter range for base-in (divergence) training and 24-diopter range for base-out (convergence) training for a total accommodation range of 40 diopters.

#104700



Dart Board Polarized Variable Vectograph

Dartboard Polarized Variable Vectograph offers a three-dimensional picture used to strengthen the binocular system and providing base-in and/or base-out vision training. Different objects in the vectograph are at varying Depth Levels (Degrees of Arc) and Image Orientation.

#105100



Popcorn Polarized Variable Vectograph

Popcorn Vectograph has a range of 6,100 seconds of arc stereopsis depth. Popcorn Bowl & kernels orientation to the Vectograph above, below, and even with the image at +30 to +1500 seconds of arc & -25 to -1100 seconds of arc. 16-diopter range for base-in (divergence) training and 24-diopter range for base-out (convergence) training for a total accommodation range of 40 diopters.

#105900



Fruit Bowl Polarized Variable Vectograph

Fruit Bowl Polarized Variable Vectograph has a range of 10,500 seconds of arc stereopsis depth. Fruit images above, below, and even with the image at +60 to +2,325 seconds of arc & -60 to -1,552 seconds of arc. 16-diopter range for base-in (divergence) training and 24-diopter range for base-out (convergence) training for a total accommodation range of 40 diopters.

#104300



Balloon Polarized Variable Vectograph

The Balloon Polarized Variable Vectograph offers a three-dimensional picture used to strengthen binocular system and providing base-in and/or base-out vision training. Different objects in the vectograph are at varying Depth Levels (Degrees of Arc) and Image Orientation.

#105200



Aquarium Polarized Variable Vectograph

Aquarium Polarized Variable Vectograph has a range of 6,100 seconds of arc stereopsis depth. Aquarium images above, below, and even with the image at +30 to +1500 seconds of arc & -25 to -1100 seconds of arc. 16-diopter range for base-in (divergence) training and 24-diopter range for base-out (convergence) training for a total accommodation range of 40 diopters.

#105400



Teddy Bear Polarized Variable Vectograph

Teddy Bear Vectograph has a range of 6,100 seconds of arc stereopsis depth. Teddy Bear & Blocks orientation to the Vectograph above, below, and even with the image at +30 to +1500 seconds of arc & -25 to -1100 seconds of arc. 16-diopter range for base-in (divergence) training and 24-diopter range for base-out (convergence) training for a total accommodation range of 40 diopters.

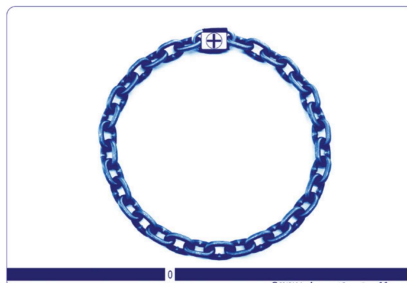
#105700



Frog Polarized Variable Vectograph

Frog Vectograph has a stereopsis depth of 5300 seconds of arc. The Frog image has a stereopsis depth of 2500 seconds of arc. 16-diopter range for base-in (divergence) training and 24-diopter range for base-out (convergence) training for a total accommodation range of 40 diopters.

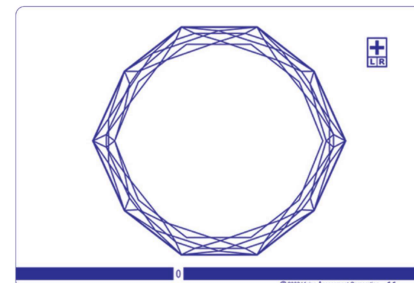
#105800



Chain Polarized Variable Vectograph

Three-dimensional Chain Vectogram image to provide an introduction to binocular experiences. 16-diopter range for Base-In (Divergence) Training and 24-diopter range for Base-Out (Convergence) Training with total accommodation range of 40-diopters.

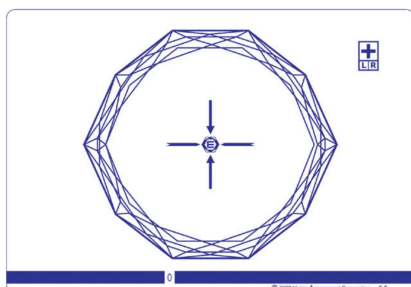
#105600



Gem Polarized Variable Vectograph

The Polarized Variable Vectograph Vision Therapy System for Vision Training is for improving the Vision Therapy outcomes from your patients using the new home reinforcement Vision Therapy System.

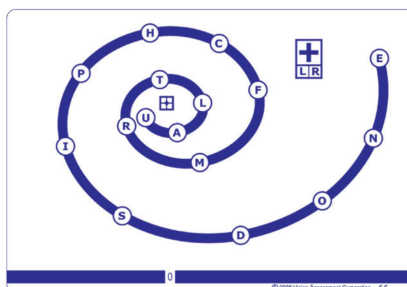
#106055



Gem PL Polarized Variable Vectograph

The Gem PL Polarized Variable Vectogram Vision Therapy System for Vision Training is for improving the Vision Therapy outcomes from your patients using the new home reinforcement Vision Therapy System.

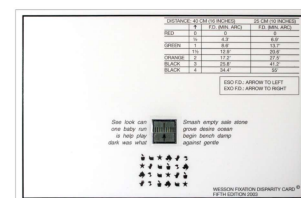
#106050



Vortex Polarized Variable Vectograph

The Vortex Polarized Variable Vectograph Vision Therapy System is for improving the Vision Therapy outcomes from your patients using the new home reinforcement Vision Therapy System.

#105550



Wesson Fixation Disparity Card

Measurements include horizontal and vertical Fixation disparity, associated phoria, and forced vergence Fixation disparity curves used for Fixation typing and the effects of visual therapy. In addition, accommodative lag may be measured with high frequency and very low-frequency targets.

#462400

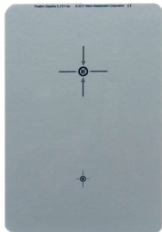


Near Fixation Disparity Target

A vectographic two-dimensional Fixation Disparity Target for assessing Near Point of Fixation Disparity and Associated Vergence Measures at Near.

Set includes Fixation disparity test and adult Polarized.

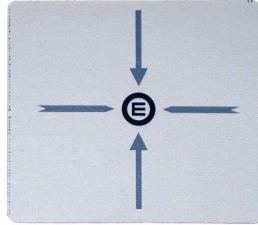
#106550



Small Fixation Disparity Polarized Target

Small Fixation Disparity Polarized Target Vectographic two-dimensional card with 2 Fixation Disparity Crosses positioned vertical to one another to facilitate the comparison of binocular performance when using a lower versus higher spatial frequency or acuity demand.

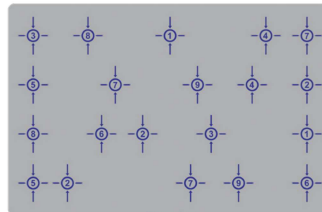
#107105



Far Fixation Disparity Target

A vectographic two-dimensional Fixation Disparity Target for assessing Far Point of Fixation Disparity and Associated Vergence Measures at Far.

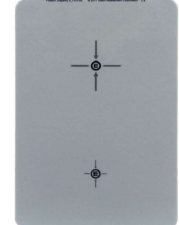
#106575



Randomized Large Fixation Disparity Polarized Target

Assessment tool for measuring binocular/accommodative function during a saccadic eye movement task using a sequence of saccadic identification targets. Card features Disparity Cross stimuli presented with a 20/100 target size, reflective of the visual demands of larger print books.

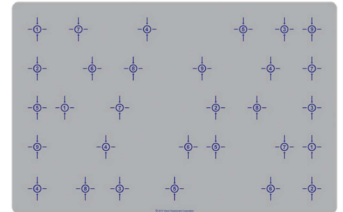
#107103



Large Fixation Disparity Polarized Target

The Fixation Disparity Cross design is used as saccadic stimuli in the Binocular Accommodative Saccadic Series (BASS-PL), and to facilitate comparison to the standard Fixation Disparity Cross (top cross at 20/95 acuity level) as used in the Binocular Vision Dysfunction Diagnostic & Treatment System.

#107102



Randomized Small Fixation Disparity Polarized Target

Randomized Small Fixation Disparity Polarized Target Assessment tool for measuring binocular/accommodative function during a saccadic eye movement task using a sequence of saccadic identification targets. Presented with a 20/63 target size to reflect higher grade reading material.

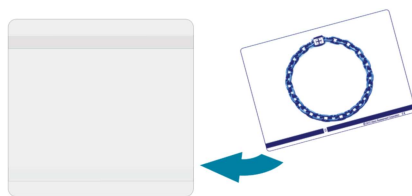
#107104



Visual Edge Slant Board

The Visual Edge Slant Board is designed to be lightweight, durable, transportable, multifunctional and affordable. Visual Edge Slant Board Dimensions are 12 x 18 inches (30.48cm x 45.72cm) and only weighs 1.5 lbs! (.68k)

#300700



Vectograph Adapter

Clear adapter that allows vectographs from Vision Assessment Corp. to be used in the taller 5.5 in. (13.97 cm) high single or double vectogram viewer.

#105000

